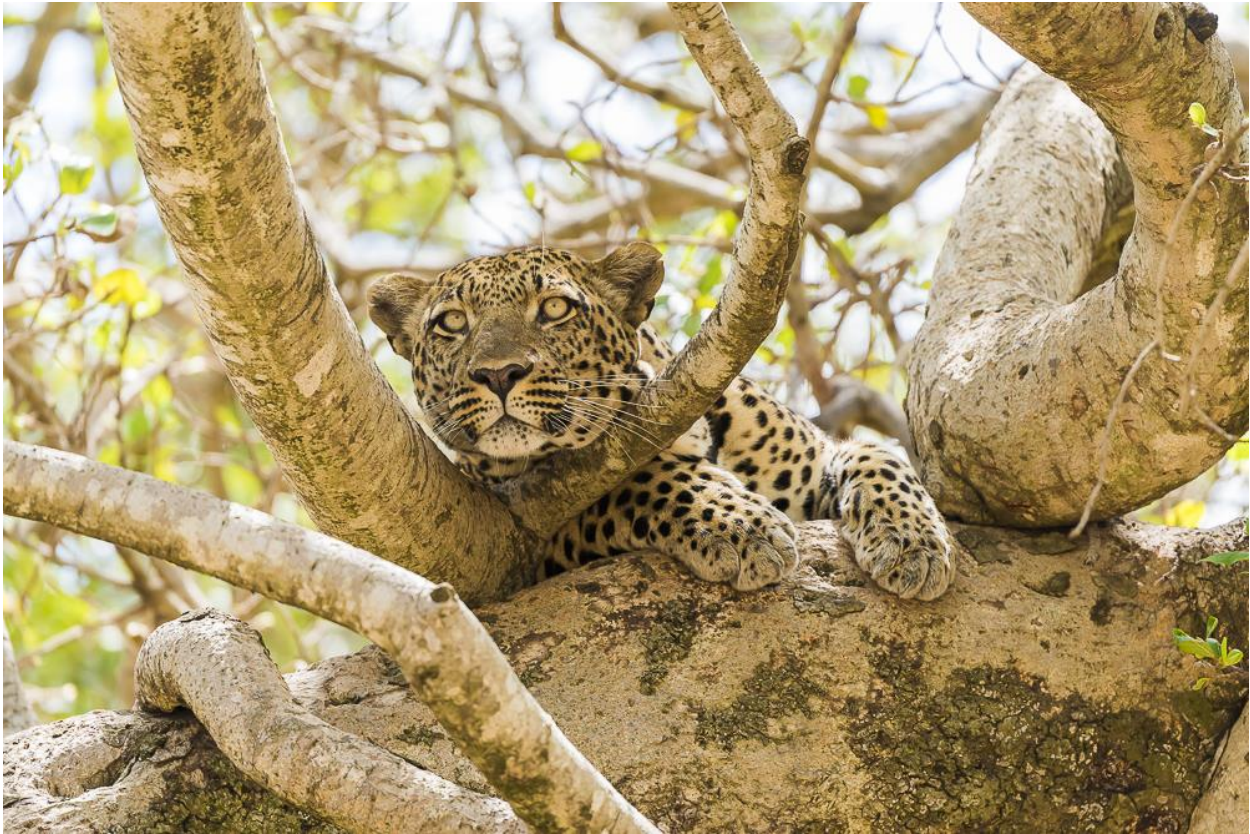


## The highlights of Tanzania



### Summary and driving distances

- Day 1. Arrival Kilimanjaro Airport – Arusha (approximately 1 hour)
- Day 2. Tarangire National Park (approximately 2 hours)
- Day 3. Tarangire National Park & Maasai culture (approximately 1 hour)
- Day 4. Lake Manyara National Park (approximately 30 minutes)
- Day 5. Serengeti National Park (approximately 5 hours)
- Day 6. Serengeti National Park
- Day 7. Serengeti National Park
- Day 8. Ngorongoro Conservation Area & Karatu Highlands (approximately 5 hours)
- Day 9. Ngorongoro Crater (approximately 1 hour)
- Day 10. Kilimanjaro Airport (approximately 4 hours)

### Accommodation options

- A: Ilboru / Angata / Isoitok / Kenzan / Endoro
- B: Ngaresero / Ndovu / Isoitok / Nyumbani / Plantation
- C: Coffee Lodge / Swala / Kilimamoja / Nanyukie / Gibbs

---

### Day 1

Arrival at Kilimanjaro International Airport where you will meet with your driver guide and transfer to Arusha. Check in at your choice of accommodation and enjoy a delicious dinner followed by overnight.

### Day 2

After a leisurely breakfast you will be collected again by your driver guide and head through a changing landscape toward Tarangire National Park, also known as the Elephant Playground. Enjoy your picnic lunch one a prime spot in the park and continue with afternoon game drives. Apart from herds of





Elephant you are likely to see other large mammals such as Buffalo, Giraffe, Warthog and several different types of Antelopes but Tarangire National Park is also a bird lovers paradise. Late afternoon you will make your way to your choice of accommodation where you enjoy sundowner drinks and share stories of your first day in the Tanzanian bush.

### **Day 3**

Wake up call as the sun rises and after a hot cup of coffee or tea you head out on an early morning game drive in the hope to catch some of the cat families.

Return to the camp for a full breakfast and some relaxation, then board the safari vehicle again and slowly make your way out of the park and on to Isoitok Camp Manyara located in the middle of a maasai community.

Meet with your local maasai guide who will introduce you to the village, the maasai people and his culture. During the maasai medicine walk you learn about the different root and plant extract still being used by the maasai on a daily basis and you will visit a traditional boma.

### **Day 4**

Morning departure to Lake Manyara National Park known for its tree climbing lions. Enjoy game drives of this diverse national park and you will have a picnic lunch in the bush followed by afternoon game drives. Late afternoon you have the option to stop at the village of Mto wa Mbu and visit the local market or have a small beer in one of the local pubs.

### **Day 5**

Today is a long driving day as you head through the Ngorongoro Conservation Area to the Serengeti plains. Afternoon game drives en route to your choice of accommodation where you enjoy sundowner drinks at the fireplace followed by dinner and overnight.

### **Day 6 & 7**

You have two full days to explore the wide-open plains of Serengeti National Park. Visit the Rock Kopjes where you have good chances of seeing some of the cat families or the little hyraxes hanging out on these rocks. You plan your day together with your driver guide and you have the choice to return to the camp for hot lunch or head out for the day with packed lunches.

### **Day 8**

Dawn game drives of the Serengeti and return to the camp for breakfast. Then slowly start the drive through the Ngorongoro Conservation Area with game drives en route and onto the Karatu Highlands where you check in at your choice of accommodation.

### **Day 9**

Departure after breakfast for a full day of game drives of the famous Ngorongoro Crater. Short stop at the viewpoint before descending onto the crater floor for game drives. There's a vast number of large mammals residing in the park including the Black Rhino and large lion families.

You enjoy a picnic lunch followed by game drives till late afternoon when you climb out of the crater and return to your accommodation.

### **Day 10**

Leisurely breakfast at the lodge and then slowly transfer back to Arusha. Your driver guide will either drop you at Kilimanjaro International Airport for your flight back home or at Arusha Airport for your next safari or beach destination.

---

### **Inclusive:**

- Park fees, Conservation and Community Development fees
- Lodge and tented camp accommodation as stipulated
- All meals
- Complimentary mineral water, coffee and tea in the safari vehicle





- 4x4 game viewing vehicles plus driver guide (window seat guaranteed)
- Unlimited game drives
- Emergency Evacuation Cover
- All transfers and activities as mentioned above

**Exclusive:**

- Tips suggested:
  - Driver guide \$10+ per person sharing the vehicle per day
  - Accommodation tip boxes
- Drinks mineral water, coffee and tea in the safari
- Visa and airport departure tax
- COVID testing costs and additional transport if required
- Items of personal nature and not mentioned in the above itinerary

